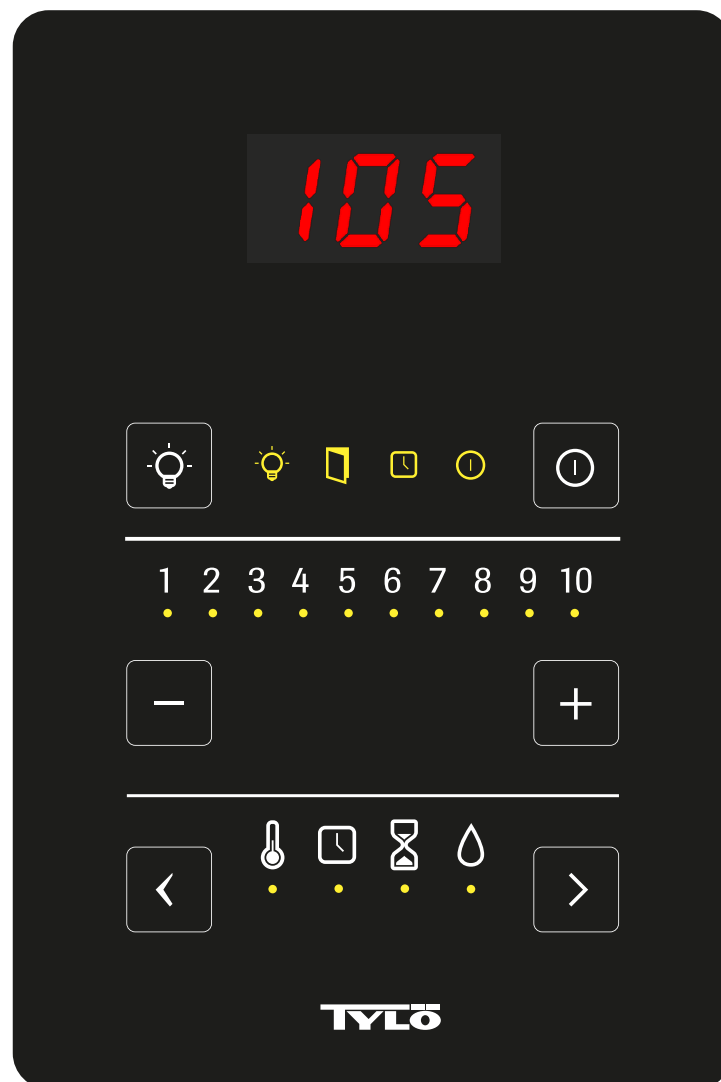


PURE



TYLÖ

Installation Guide

The operating panel must be installed indoors in a frost-free environment.

The control panel should be installed outside the sauna room, but can also be installed inside or outside the sauna/steam room. utanför basturum/ångrum. installing inside the sauna cabin, the upper edge must not be more than 80 cm above the floor, and must be at least 30 cm from the heater. The ambient temperature where the Pure control panel is installed must never exceed 80 °C.

The unit can be mounted on the wall using the bracket or double-sided adhesive supplied. If using the bracket, mount the control panel on the bracket using adhesive. A 30 mm hole through the wall is required if mounting the control panel directly on the wall.

EN

When installing the panel inside the steam room/sauna, installation must be directly to the wall, using the accompanying adhesive or a Tylö embedding frame (item no. 90001056). The wall must be smooth and perfectly clean after hole drilling (30 mm) before installation. The bracket must not be used.



Installation with bracket

Use the bracket as a template to mark up screw holes on the wall. Tighten the screws a little until the bracket is loosely secured.

Secure the adhesive to the bracket (see Figure 1).

Fig 1

Remove the protection from the adhesive and secure the panel to the bracket (see Figure 2).



Fig 2

Attach the cable and switch to the bracket (see Figures 3 and 4). Remember to position the switch in accordance with the illustration (the locking tongue should be at the left side when seen from below). Install the panel on the wall. Use the supplied control panel cable to connect the panel to the heater. If the cable is too long, it can be shortened, then use the extra switch supplied. NB: special pliers are required (crimp pliers for 2.5 mm²).

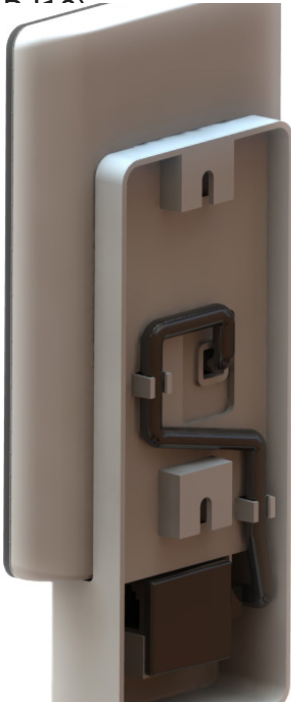


Fig 3

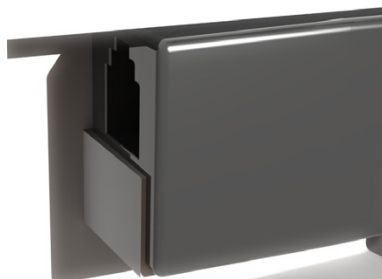


Fig 4

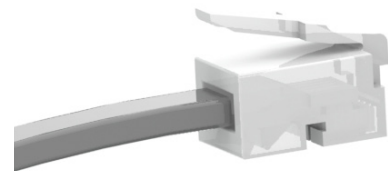


Fig 5

EN

Installation without bracket

Attach the double-sided adhesive to the control panel. Before attaching the panel to the wall, connect it to the heater to check that everything works. Remove the protective backing from the adhesive. Connect the panel wire, pass the contact through the hole in the wall and press the panel firmly against the wall.

If fitting the panel without the bracket but it is necessary to run the cable outside the wall, the following solution can be used (see Figure 6). This only applies to installation inside the sauna cabin. Remember that the hole through which the contact will pass must be min. 30 mm.

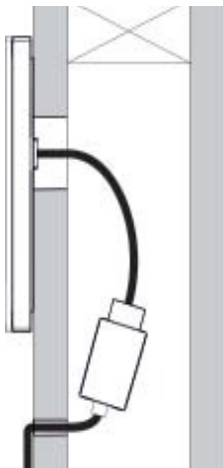
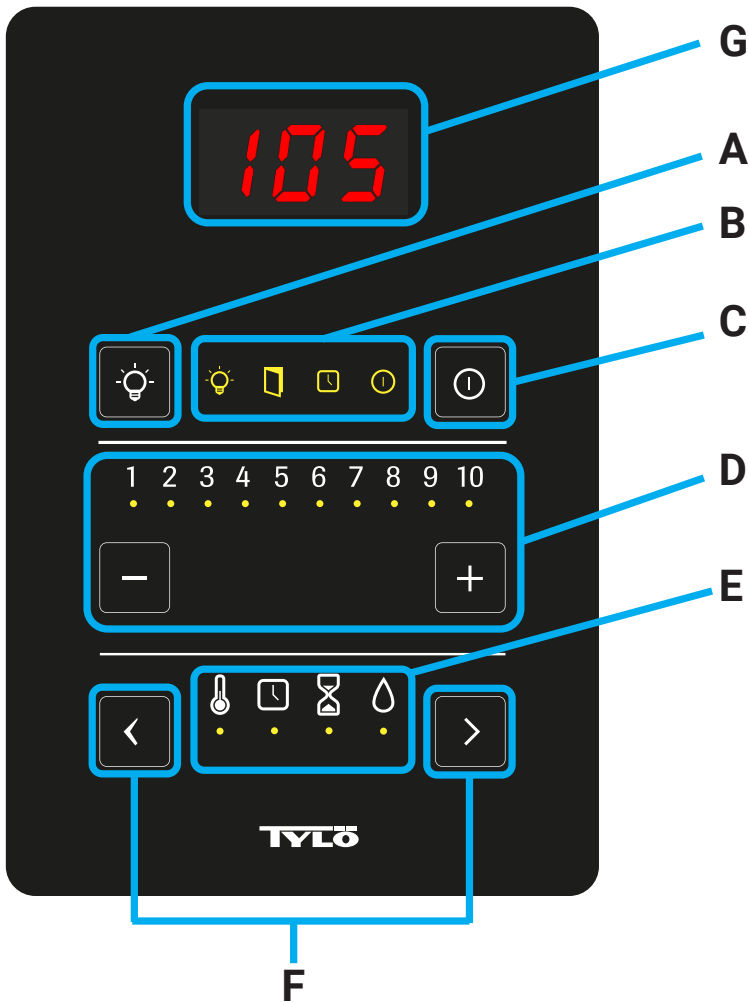


Fig 6



EN

- A. Light - Switches light on/off
- B. Indicators for light, door contact, delayed start and to show that the heater is working.
- C. Start, stop and error indication
- D. Enter values.
- E. Function selection for temperature, delayed start, operating time and humidity (for certain products only).
- F. Function selection buttons.
- G. Temperature display. Displays current temperature

First start

Set heater switch to ON. The indicator diodes (B) will flash a few times. This indicates that the control panel is connecting to the heater. When contact is made, the diodes will cease flashing and diodes 1-7 (D) corresponding to the program no. selected will flash 4 times to show setting. This will also occur after any disconnection of power.

Pure's default setting is to regulate a heater to max. 110°C and max. operating time of 6 hours. Maximum temperature and operating time can be adjusted. The Pure is factory set to program 1 for Sauna/Combi and program 6 for Steam. These programs only need to be changed if you want to change the temperature or the running time

There are 9 basic settings/programs for temperature and operating time. They are:

Program	Max. temperature	Max. run time	Product	Unit
1	110 °C	6 h	Bastu, Combi	Celcius
2	110 °C	10 h	Bastu, Combi	Celcius
3	110 °C	24 h	Bastu, Combi	Celcius
4	194°F (90 °C)	1 h	Bastu, Combi	Fahrenheit
5	194°F (90 °C)	24 h	Bastu, Combi	Fahrenheit
6	55 °C	10 h	Ånga	Celcius
7	55 °C	24 h	Ånga	Celcius
8	125°F (52 °C)	1 h	Ånga	Fahrenheit
9	125°F (52 °C)	24 h	Ånga	Fahrenheit

EN

Only programs that are intended for the product may be used. In other words, you cannot use a program intended for steam with a sauna or Combi heater. The temperature will be displayed in either Fahrenheit or Celsius as default, depending on which program has been chosen. To change the temperature display, press the < button for 5 seconds. After 2 seconds the temperature indicator will start flashing, and a C or F will appear in the temperature display to indicate that the temperature display has been changed. In order to change the temperature display, the power must have been switched on for least 5 minutes and the LED temperature indicator must be illuminated.

How to program:

1. Connect the control panel to the heater. Wait until contact between them is established. Once started, programming must be started within 5 minutes.
2. Press the left arrow. The ON diode (C) will start to flash. After 5 seconds, it will be lit continuously. Release the button.
3. Press the right arrow. The node diodes will start to flash (F). After 5 seconds, they will light continuously and the program selection diode will light (D). Release the button.
4. Scroll to the program required and confirm with ON.
5. Restarting the system.
6. The active program diode will flash 4 times when starting.

If changing the program later, disconnect the control panel to perform the above procedure within 5 minutes of restart.

Start

To start the sauna, press (C). The last temperature setting and operating time will be used. The symbol will light in the indicator field to show that the heater has started.

To switch off the sauna before the end of the operating time set, press the same button again.

Use the function selection buttons (F) to select temperature setting. Use the - and + buttons to then select temperature setting 1-10. The temperature obtained depends on the max. temperature set, i.e. which program has been set. Temperature can be adjusted whilst taking a sauna if required.

Max. temperature	Set temperature (approx. value, °C)									
	1	2	3	4	5	6	7	8	9	10
52 °C	30	33	35	37	40	42	44	47	49	52
55 °C	30	33	36	38	41	44	47	49	52	55
90 °C	40	46	51	57	62	68	73	79	84	90
110 °C	40	48	56	63	69	79	87	94	102	110

EN

If you change the temperature with the +/- buttons, the temperature setting for this level is briefly displayed.

Setting delayed start

You can set a time when the heater is to start after a certain time. A door contact must be connected for this purpose (see "Connecting door contact and its function"). Use the function selection buttons (F) to select the timer symbol. Use the - and + buttons to select the number of hours until the heater is to start (1-10 hours). Activate delayed start by pressing the Start button (C).

The indicator symbol for delayed start will light (field B) and the time delay diode will start to flash. The flashing indicator will count down and show the actual time remaining until the heater starts. Once the heater starts, the panel will switch to showing set temperature automatically.

The door contact to be used is Tylö item number 90908035.

Setting sauna time

Sauna time is set when the heater is OFF. Use the function selection buttons (F) to select operating time setting. Use the - and + buttons to then select operating time 1-10. Operating time depends on the max. operating time set, i.e. which program has been set.

Version	LED indicators									
	1	2	3	4	5	6	7	8	9	10
1 h	6 min	12 min	18 min	24 min	30 min	36 min	42 min	48 min	54 min	1 h
6 h	1 h	2 h	3 h	4 h	5 h	6 h				
10 h	1 h	2 h	3 h	4 h	5 h	6 h	7 h	8 h	9 h	10 h
24 h	2 h	4 h	6 h	8 h	10 h	12 h	14 h	16 h	18 h	24 h

Setting humidity level (Combi)

EN

Use the function selection buttons (F) to select a humidity setting. Use the - and + buttons to then select humidity levels 0-10. Select 0 (off) by pressing < when humidity is set to 1. Each step on the scale indicates the length of time for which the element in the water tank will operate. The temperature obtained depends on the maximum temperature set. Both humidity and temperature can be changed during operation. While the sauna is heating up, the amount of steam produced depends on the temperature level that is set. Humidity is prioritised with temperature settings 1-5 and temperature is prioritised for settings 6-10. When humidity is prioritised, steam is produced according to the setting; when temperature is prioritised, humidity only runs once the set temperature is reached.

When the water reservoir is low, three beeps will sound and the water drop symbol will flash. Top up with water until a long beep sounds.

After a sauna session ends, when the reservoir has been in use, a sauna drying process will start. The sauna will be heated to 80 °C for 20 minutes. The ON symbol will flash to indicate that drying is in progress. To switch off the drying process, press the Off button (C).

	Humidity settings									
	Humidity is prioritised					Temperature is prioritised				
	1	2	3	4	5	6	7	8	9	10
Tank on (min:sek)	01:45	02:00	02:17	02:33	02:47	03:05	03:20	03:35	03:50	Continuous
Tank off (min:sek)	02:23	02:08	01:51	01:35	01:21	01:03	00:48	00:33	00:18	No break

Connecting door contact and its function

A magnetic contact to detect when the door is open can be connected. The contact to be used is Tylö item number 90908035. The contact is connected to the heater according to the instructions supplied. A door contact must be connected for the delayed start function. A door contact must also be connected to use an external switch. If the heater has been programmed for delayed start and the door is opened after the program is activated, the program will be disrupted and the indicator will flash. To reactivate the program for delayed start, press the Start button and close the door within 60 seconds.

If the panel is placed inside the sauna, you have 60 seconds to go out and close the door once delayed start has been activated.

If the door is opened and left open for more than 5 minutes during operation, the heater will be switched off and error code 19 will show on the panel.

Using an external switch

An external switch for starting/stopping the heater not mounted on the control panel can be connected. A door contact must be installed. See wiring diagram supplied with external switch for connection. We recommend using Tylö's external switch (item number 90908047). This also provides indication via LED of whether the sauna is on, programmed for delayed start and error status for a magnetic door contact (if fitted). A continuous light indicates that the heater is on.

Slow flash indicates that the heater is programmed for delayed start.

Rapid flash indicates that the door has been opened when the heater is programmed for delayed start. Alternatively, the door has been open for more than 5 minutes during operation or has been opened after the heater has been switched off. The control panel will then require resetting.

Error message

If an error should occur on the heater or other equipment (control panel, temperature sensor etc.) an error message will be shown using LED indicators. The indicator LEDs will flash whilst one LED on the 1-10 scale is continuously lit or flashes. If it lights continuously, it refers to error message 1-10 and if it flashes, it refers to error messages 11-20.

Error messages (– indicates not relevant to this application):

1. Temperature sensor not connected or faulty
2. Temperature sensor in steam tank not connected or faulty.
3. Heater circuit board overheated
4. The level electrodes in the tank are short-circuited (Combi)
5. The steam tank overfull level electrodes are not working.
6. Contact lost with the heater network control panel node.
7. Contact lost with the heater grid node temperature/humidity sensor.
8. The steam tank has overheated.
9. Real-time clock (RTC) communication error.
10. -
11. There is a fault in the emptying of water from the steam tank. Switch off the power and perform servicing.
12. The level electrodes are not working. Mid. failure. (Combi)
13. -
14. -
15. Contact lost with the heater network relay board node.
16. Temperature cut-out is activated, must be reset.
17. -
18. Too many slave units connected
19. Door has been open for more than 5 minutes when the sauna is on.
20. Door has been opened. Check sauna.

EN

For certain errors, disconnecting current to the heater for a brief period and then reconnecting can be tried. This mostly concerns problems that have occurred with communication between units connected.

In the event of error number 3, the heater will be automatically switched off. When the temperature has dropped approx. 20°C, the sauna heater can be restarted. Always investigate why the heater overheated. It can be the result of insufficient ventilation or that the heater needs crumbled stone removed.

Contact your dealer for other errors or if an error cannot be corrected according to the above. Check the heater's type plate and note the type, serial number, year of manufacture and make a note of any error code on the control panel before contacting Tylö Customer Support.